

CURRENT TRANSFORMERS

Model 5A

Window Diameter 1.56"

Application:
Ammeters and wattmeters

Frequency:
50 - 400 Hz

Insulation Level:
600 Volts, 10 kv BIL full wave

• Terminals are brass studs No. 8 - 32 UNC with one
□ flat washer, lockwasher and regular nut.

• □ Flexible leads are UL 1015 105° C, CSA
□ approved, #16 AWG, 24" long

• □ Non-standard length to be specified.

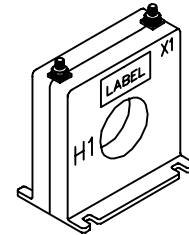
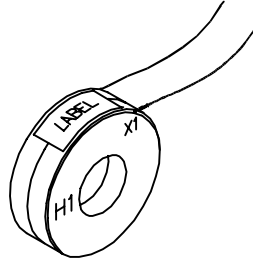
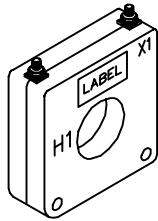
• □ Model 5ASHT also available as 5ASHL and 5ASFL with leads.

• Order mounting bracket kit B when
□ required for Model 5SHT.

• □ Approximate weight: 1 lb.

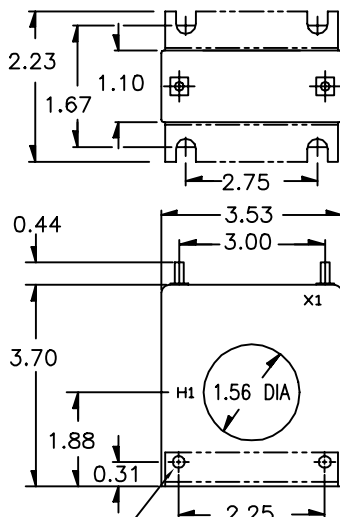


E228202



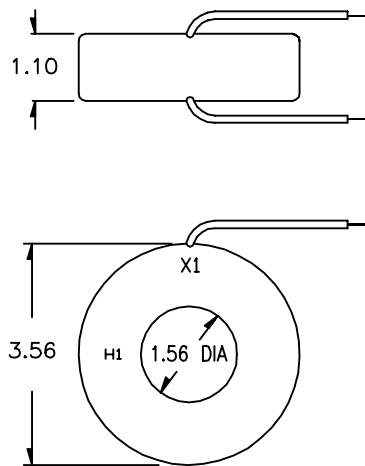
(4) OPEN SLOTS
0.22 X 0.34

5ASHT



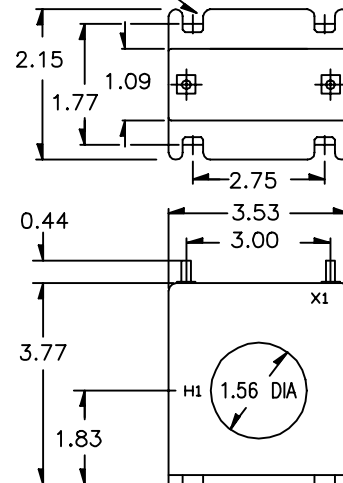
(2) HOLES
0.20 DIA

5ARL



(4) OPEN SLOTS
0.21 X 0.31

5ASFT



CATALOG NUMBER	CURRENT RATIO	V.A. FOR ±1% CLASS	ANSI METERING CLASS AT 60 Hz					SECONDARY WINDING RESISTANCE (OHMS @ 75°C)	CONTINUOUS THERMAL RATING FACTOR	
			B0.1	B0.2	B0.5	B0.9	B1.8		@30°C	@55°C
5A**- 500	50:5	1.0	4.8	-	-	-	-	0.009	2.0	2.0
5A**- 750	75:5	1.0	2.4	4.8	-	-	-	0.010	2.0	2.0
5A**- 101	100:5	1.0	1.2	2.4	-	-	-	0.012	2.0	2.0
5A**- 151	150:5	5.0	0.6	1.2	2.4	4.8	-	0.019	2.0	2.0
5A**- 201	200:5	5.0	0.6	0.6	1.2	2.4	4.8	0.024	2.0	2.0
5A**- 251	250:5	12.5	0.3	0.3	1.2	2.4	2.4	0.033	2.0	1.5
5A**- 301	300:5	15.0	0.3	0.3	0.6	1.2	2.4	0.040	2.0	1.5
5A**- 401	400:5	20.0	0.3	0.3	0.6	1.2	1.2	0.091	1.5	1.0
5A**- 501	500:5	25.0	0.3	0.3	0.6	0.6	1.2	0.105	1.33	0.8
5A**- 601	600:5	30.0	0.3	0.3	0.3	0.6	1.2	0.158	1.0	0.8
* 5A**- 751	750:5	30.0	0.3	0.3	0.3	0.6	0.6	0.147	1.0	0.8
* 5A**- 801	800:5	30.0	0.3	0.3	0.3	0.6	0.6	0.156	1.0	0.8
* 5A**- 102	1000:5	35.0	0.3	0.3	0.3	0.3	0.6	0.196	1.0	0.8
* 5A**- 122	1200:5	40.0	0.3	0.3	0.3	0.3	0.3	0.291	1.0	0.6

** NOTE: When ordering, prefix Cat No. with model designation required, i.e. 5ASHT-501, 5ARL-501, etc.
* Available in the 5ASHT and 5ASFT case only.